



3D Project Ideas



LIP BALM GIFT BOX



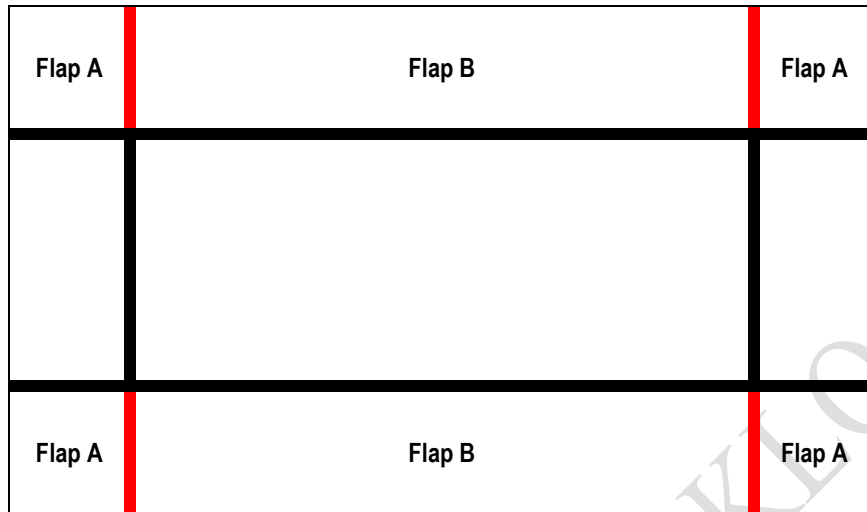
SUPPLIES

- Cardstock 2" x 4"
- DSP 2 3/4" x 3 1/2"
- Ribbon – about 10"
- Lip Balm
- Any embellishments/tags you want to add

INSTRUCTIONS

1. Refer to Diagrams below as needed
2. On your cardstock, with the 4" side at the top of your scoring tool, score at 5/8" & 3 3/8"
3. Rotate cardstock 90 degrees to the right and score at 5/8" and 1 3/8"
4. On long side (4") trim along score lines from edge of paper to first score line on each side
5. To form box, fold Flap A over, securing to Flap B. Repeat on all sides creating box.
6. Please lip balm in box
7. On DSP with the 3 1/2" side at the top of your scoring tool, score at 3/4"; 1 3/8"; 2 1/4"; & 2 7/8"
8. Fold along all score lines
9. Add adhesive to Flap B and secure to Flap A, creating sleeve for the box – NOTE: Flap B **will not** come to the edge of Flap A – this is fine
10. Slide box into sleeve
11. Add Ribbon and any embellishments and tags as desired



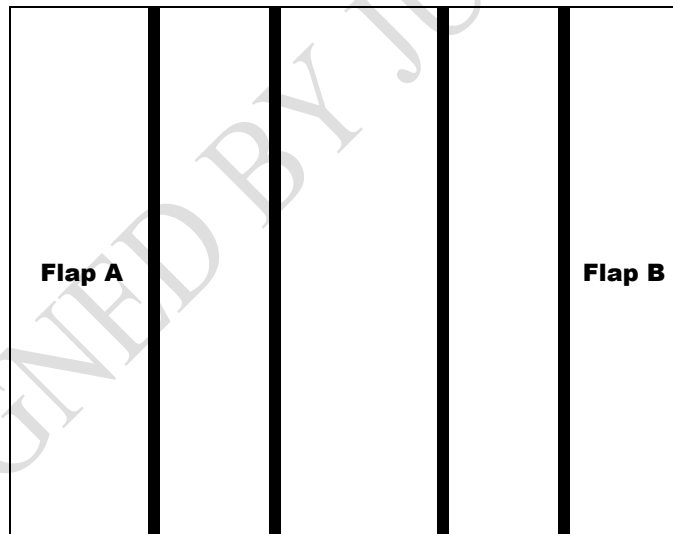


Cardstock

2" x 4"

Thick Black lines – score lines

Thick Red lines – score than cut lines



DSP

2 3/4" X 3 1/2"

Thick Black lines – score lines



DESKTOP CALENDAR



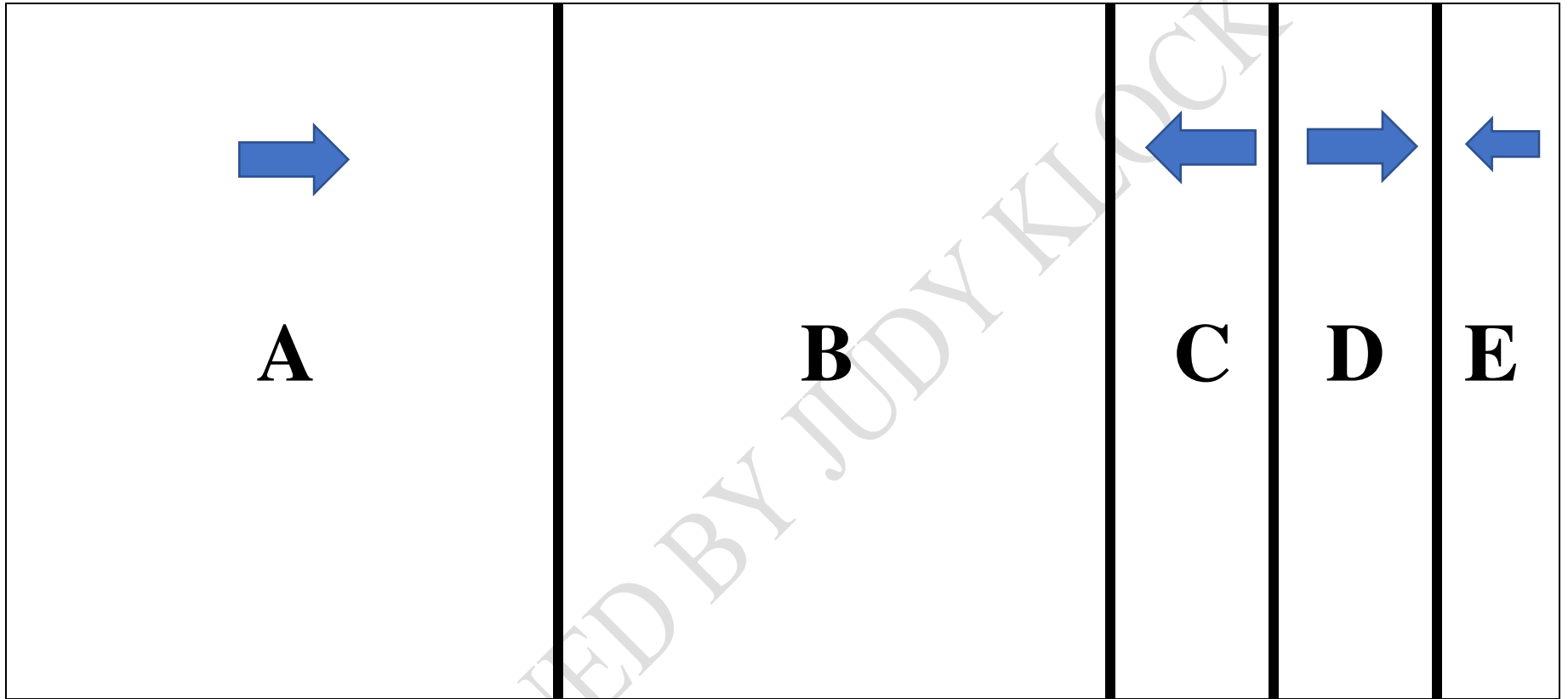
SUPPLIES

- Cardstock 4 1/4" x 9 1/4" & scored at 3 3/8"; 6 3/4"; 7 3/4"; 8 3/4"
- Cardstock 2 1/2" x 3 1/4"
- DSP 3" x 4"
- Mini Calendar
- Any embellishments you want to add

INSTRUCTIONS

1. NOTE: REFER TO DIAGRAM
2. Fold Panel C towards Panel B
3. Fold Panel D towards Panel E
4. Fold Panel E towards Panel D
5. Steps 2, 3, & 4 should create a "W" like fold
6. Fold Panel A over Panel B and secure to Panel E with adhesive (this becomes the back of your calendar)
7. Adhere DSP to front of Calendar
8. Adhere mini calendar to small piece of cardstock
9. Attach calendar to front of calendar base
10. Add embellishments as desired





Thick Black lines – score lines
Blue arrows – direction of fold



FLIP TOP BOX



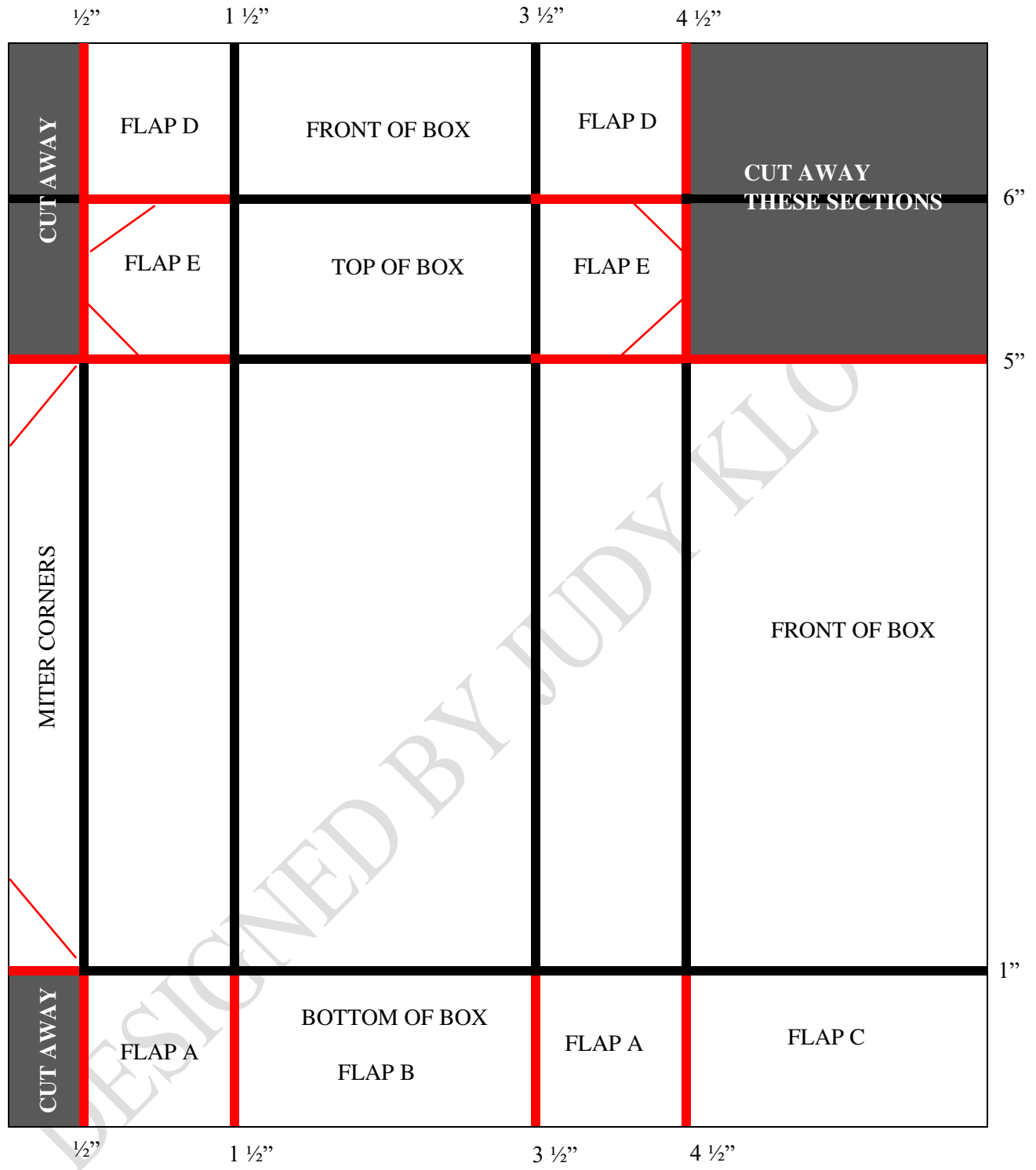
SUPPLIES

- Cardstock cut to 6 ½" x 7"
- Coordinating DSP 1 piece cut to 3 ¾" x 1 ¾" & 2 pieces cut to ¾" x 1 ¾"
- Basic White cardstock scrap for sentiment
- Any embellishments you want to add

INSTRUCTIONS

1. With 7" side at top of the scoring table, score at 1", 5" and 6"
2. Rotate cardstock 90 degrees so 6 ½" side is now at top of the scoring table. Score at ½", 1 ½", 3 ½" and 4 ½"
3. Fold along all score lines (bold lines on diagram)
4. REFER TO DIAGRAM FOR CUT LINES
5. Cut away gray areas show on diagram; miter corners on ½" tab
6. On box bottom cut along 1 ½", 3 ½" and 4 ½" score lines to 1" horizontal score line
7. On box top, on the left edge cut along the 5" & 6" score lines to the 1 ½" vertical score line and on the right edge cut along the 5" & 6" score lines to the 3 ½" vertical score line to create flaps for flip top (see red lines on diagram)
8. Miter corners on Flap E on both sides of the top. Miter corners on ½" strip on the left
9. Fold ½" strip along score line towards inside of box; add adhesive to strip
10. With box flat on surface, fold over box front along 3 ½" vertical score line, having left edges meet and adhere to adhesive on ½" strip
11. Open and fold along vertical score lines to create box
12. On Bottom of box fold Flaps A towards middle of box. Add adhesive to underside of Flap B and adhere to Flap A. To help secure, insert bone folder into top of box and press against the bottom
13. Add Adhesive to Flap C and adhere to top of Flap B
14. On top of box, fold top over along 5" horizontal score line, placing Flaps E along sides of box
15. Place adhesive on underside of Flaps D; Fold over along 6" horizontal score line and secure Flaps D to Flaps E, creating flip top
16. Add 3 ¾" x 1 ¾" DSP to front of box; add ¾" x 1 ¾" DSP to front and top of flip top lid
17. Embellish with gems and ribbon as desired
18. Add tag or sentiment as desired





6 1/2" wide x 7" tall

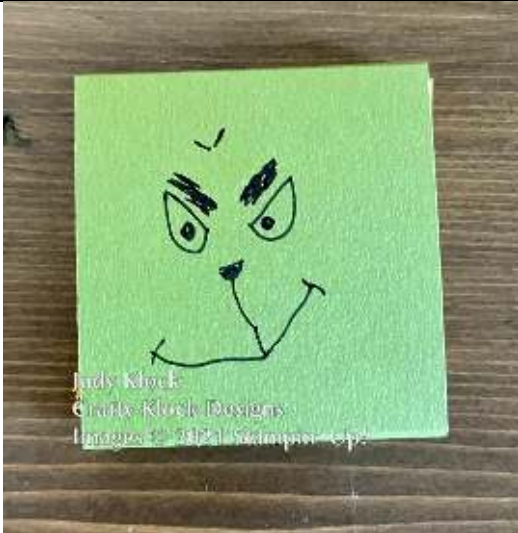
Thick Black lines – score lines

Thick Red lines – score than cut lines

Thin Red lines - cut



GRINCH OR SANTA CANDY WRAPPER



SUPPLIES:

- Old Olive cardstock or Real Red cardstock 5 1/2" x 2 1/8"
- Black Marker for Grinch
- Basic Black Cardstock 3/4" x 2 1/8" for Santa belt
- Basic White Cardstock 1" x 2" for Santa trim
- Gold metallic paper for Santa Buckle
- Ghirardelli Chocolate Square

INSTRUCTIONS

1. With 5 1/2" side of cardstock along the top of your score tool, score at 3/4", 1", 3 1/4" & 3 1/2"
2. Fold along score lines, creating a matchbook like holder
3. For Grinch draw Grinch Face on back of wrapper / for Santa add Basic Black to bottom fold of Real Red cardstock; add a piece of Gold Metallic for belt buckle using any shape you want. Rip side edges of Basic White to create a rough edge; adhere to center front of Real Red cardstock
4. Adhere candy to inside of wrapper with snail or tear & tape
5. Fold wrapper over, creating a matchbook type holder; secure bottom front of matchbook to top front with adhesive if necessary

